

WIRELESS RIB SWITCH INSTALLATION & PROGRAMMING INSTRUCTION

NOTE

Before proceeding, refer to the units specific IOM Manual for safety, installation and start information. Verify proper voltage to the product per local and NEC codes.

RIB Controller

RIB relay controller (RIBW***-EN2) is a two way wireless transceiver controlling the air curtain and/or panel, turning the motor ON/OFF. The RIB is limited to ½ total HP at 115V or 208/230V, 1 Ø units. Typically they are factory mounted to the air curtain housing or to a motor control panel but can also be remote mounted. These controllers have two buttons - learn and clear button and a red LED light at the bottom as shown in the figure 1.

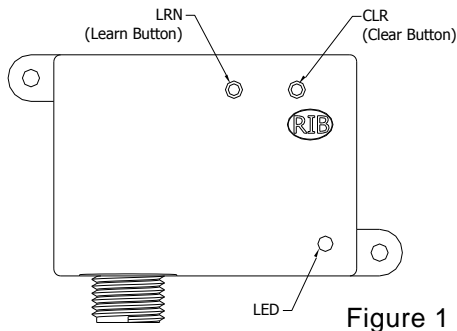


Figure 1

The switch should be mounted with the switch housing on the door trim and the magnet on the door and perform a thorough check to insure normal use will not damage the switch. Magnet placement is critical for operation. The gap between the switch and magnet should not exceed ½”, nor should it be so close as to cause damage during the opening and closing of the door. The magnet should be oriented towards the label which indicates placement of magnet (see figure 2)

Screws should be used to mount wireless switch and magnet (figure 3) –

1. Using small flat head screwdriver, pop the rear mounting plate off the wireless switch.
2. Use the back plate as template and drill holes for #6 screws (not supplied) and mount back plate.
3. Snap on the wireless switch body including the battery to the back plate. Extreme care should be taken to ensure the battery is properly housed inside switch body and wires are not pulled loose.

Wireless Solar Switch (J0053 and J0054)

The wireless switch is a solar powered device that has to be exposed to adequate amount of light for continual operation.

Rechargeable battery is provided for operation during low light periods, but this switch is not recommended for high traffic areas (<500 cycles/day). For higher traffic situations, the required battery replacements will be more frequent.

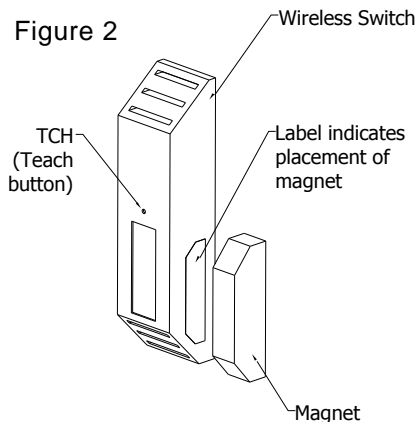


Figure 2

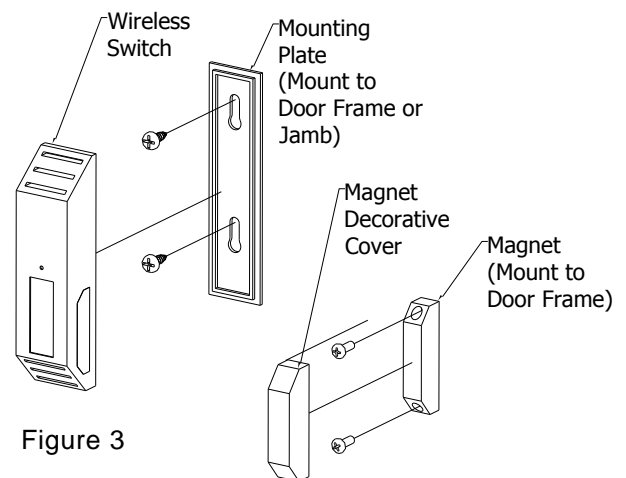


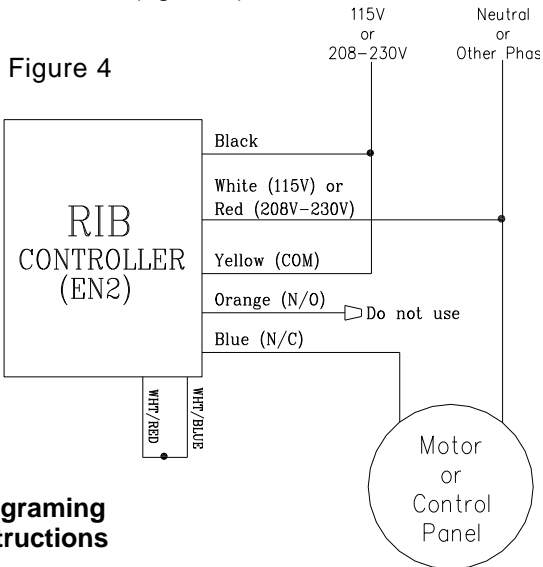
Figure 3

Alternative method, but not recommended is to use double sided tape. All surfaces should be dust and moisture free prior to adhering the switch and magnet with the double sided tape. Refrain from touching the adhesive surface. Double sided tape is not recommended for high dust, moist, oily or dry

areas, the switch must be screwed on to ensure they remain affixed to the surfaces or use an appropriate adhesive.

Wiring Instructions

Typically the RIB controller is factory wired, but can be field wired (figure 4)



Programing Instructions

Typically, the wireless switch should not be mounted over 10-15 feet away and must be in line sight of the RIB controller. Blockages, such as walls, pipes, beams, etc. will interfere with transmission of the signal and may not energize or de-energize the unit properly.

The wireless switch and the RIB controller comes factory programmed.

If the RIB needs to be reprogrammed, follow instruction below –

Step 1- Clear ID's from memory

- Apply power to RIB.
- Press and hold CLR button on RIB for 3 seconds until LED begins flashing.
- Press and hold LRN button for ½ second to exit LRN mode.

Step 2- Disable Delay Mode

- Apply power to RIB.
- Press and hold LRN button on RIB for ½ second.
- LED will flash slowly.
- Press and hold LRN button on RIB for 3 seconds until LED pattern changes
- LED pattern will be FLASH, FLASH, OFF (2 flashes).
- Press and hold LRN button on RIB for 3 seconds until LED pattern changes again.
- LED pattern will be FLASH, FLASH, FLASH, OFF (3 flashes).

- Press and hold the CLR button for 3 seconds until LED blinks three times indicating delay mode is disabled.

Note- If LED blinks two times in step h then repeat Step 2 to ensure delay mode is disabled.

Step 3- Wireless Switch (SWSDS-EN) Learn Procedure

- Apply power to RIB.
- Press and hold LRN button on RIB for ½ second.
- LED will blink slowly
- Press and release TCH button on wireless switch to transmit teach telegram.
- LED on RIB will stay ON for 4 seconds indicating telegram reception.
- To learn more wireless switch, repeat steps 2-5.

Trouble shooting

The air curtain will not turn OFF

Shine a powerful flash light on the solar panel of the wireless switch and check if the air curtain turns OFF. If yes, the battery needs to be replaced. (If a powerful flash light is not available, expose the switch to a good light source for a minimum of 2 hours and check operation)

Switch works intermittently

The door traffic may be too high and the rechargeable battery inside the switch may not get working. Check and replace battery. Move the switch closer to the RIB controller if possible.

Direct line of sight to the RIB controller is not possible. Walls or other obstructions are present

Pull the antennae from inside the switch body and leave it sticking out of the switch housing to improve signal strength.

Air curtain does not immediately turn ON when door opens but only after few seconds.

The RIB is in time delay mode. See programming instructions and follow Step 2 to disable delay mode.

The wireless switch keeps falling off

Use screws to mount the back plate of the switch to the door trim. Magnet can also be mounted using screws if needed.

KEEP THIS MANUAL FOR YOUR RECORDS.

Model Number: _____

Serial Number: _____

Date Purchased: _____

Dealer Purchased From: _____



atmosphere is everything

14716 S. Broadway St., Gardena, CA 90248

(310) 532-1555 • (800) 421-1266

Please go to our website at www.marsair.com for
a downloadable version of this document.

Fax: (310) 324-3030