



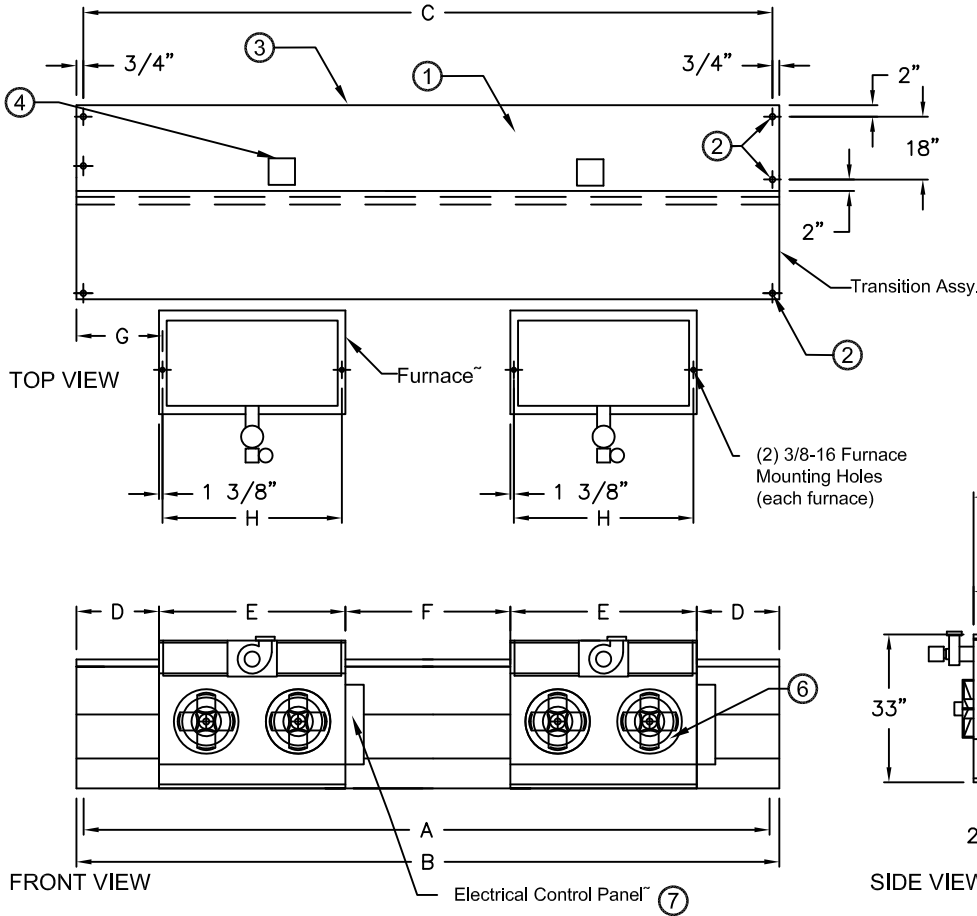
atmosphere is everything

14716 S. Broadway • Gardena, CA 90248 • USA
 TEL:(310) 532-1555 • (800) 421-1266 • FAX:(310) 324-3030
 Web Site: www.marsair.com • E-mail: info@marsair.com

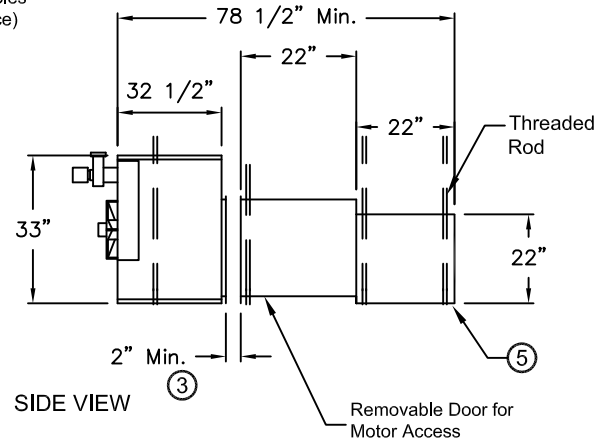
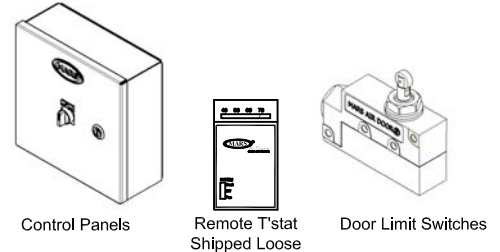
PROJECT		OPTIONS/ITEMS	
TITLE			
COMMENTS		DATE 4/21/15	PAGE
		REV. NO	
MODEL NO. WMH Series	DRAWING NO WMIH-F	DRAWN BY TVN	CHECKED BY
		FILE NAME	

Indirect Fired Gas Heated Drawing

WMH (Wind Stopping 16) Series



⑧ Recommended Accessories



Notes:

- The Air Curtains are CSA listed and the Furnaces are ETL verified to be 83% efficient with 3/8" overhead mounting hardware for overhead mounting.
- 5/8" mounting holes (6) provided, (2) on each end of air curtain and (1) on each end of transition assembly.
- Cabinet has sufficient strength for fastening from overhead on both ends without intermediate support. Furnace must be mounted at least 2" away from the transition. Transition pieces are provided with pilot holes for easy field assembly and hardware is included. Units larger than 8' utilize multiple transitions.
- One watertight electrical junction box per motor mounted on top center of each motor.
- Unit is to be installed such that air flow is unobstructed. Air discharge nozzle containing adjustable air directional vanes with 40° sweep front to back.
- Furnaces with impellers have positive pressure, 20 gauge aluminized tubular heat exchanger with in-shot burner technology, power vented exhaust (horizontal or vertical), single stage gas valve, direct spark ignition and certified for Category I and III venting.
- Circuit protection as per NEC by others.
- Optional motor control panel and door limit switch are field installed and/or wired by others. The door limit switch is to be mounted such that the air curtain turns on as door begins to open. To prevent unit damage, the air curtain must be installed such that the bottom of the air curtain is not below the door header.

Note: MARS reserves the right to change specifications and product design without notice. Such revisions do not entitle the buyer to corresponding changes, improvements additions or replacements for previously purchased equipment.

*Please see Furnace Submittal for Furnace Data and Dimension
 Removal of Furnace may be required for servicing and trouble shooting.

*- Use corresponding letters in "Electrical Data" columns to complete the model numbers.

MODEL NUMBER	Nozzle Width (In) A	Overall Width (in) B	Mounting Centers (In) C	End Space (in) D	Furnace Width (in) E	Center Space (in) F	Mounting Distance (in) G	End Dim (In) H	Furnace Size (MBH)
WMH96-2I*-TS	96	99	97 1/2	8 3/8	32 3/4	16 3/4	9 3/4	30 5/8	2@250
WMH120-2I*-TS	120	123	121 1/2	5 3/8	50 3/4	10 3/4	6 3/4	48 5/8	2@400
WMH144-2I*-TS	144	147	145 1/2	11 3/8	50 3/4	22 3/4	12 3/4	48 5/8	2@400
WMH168-3I*-TS	168	171	169 1/2	3 1/8	50 3/4	6 1/4	4 1/2	48 5/8	3@350
WMH192-4I*-TS	192	195	193 1/2	7 1/8	50 3/4	14 1/4	8 1/2	48 5/8	3@400

WMH (Wind Stopping 16) Series

Indirect Fired Gas Heated
Model Lengths 96" – 192"



atmosphere is everything

14716 S. BROADWAY, GARDENA, CA 90248 • Ph: (310) 532-1555 Fax: (310) 532-3030 • www.marsair.com
© Copyright Mars Air Systems, LLC 2014

Indirect Fired Gas Heated Data Sheet

Applications: Environmental Separation - Interior Door up to 20' and Exterior Door up to 18'

WMH (Wind Stopping 16)	Mechanical Data							Lab Data					
	Model Number	Nozzle Length (in)	Length (in)	Depth (in)	Height (in)	Motor (hp)	Total Weight*** (lbs)	Furnace Weight (lbs)	Max Velocity (fpm)	Max Volume (cfm)	Avg Velocity (fpm)	Volume (cfm)	Uniformity (%)
WMH96-2I*-TS	96	99	78 1/2	33	Two 5	1151	2 @ 211 ea	7300	21900	4466	13190	91	9390
WMH120-2I*-TS	120	123	78 1/2	33	Two 5	1519	2 @ 335 ea	7600	28500	4231	15670	89	12420
WMH144-2I*-TS	144	147	78 1/2	33	Two 7	1693	2 @ 335 ea	7400	33300	3816	17022	82	13300
WMH168-3I*-TS	168	171	78 1/2	33	Three 5	2175	3 @ 321 ea	6700	35175	3822	19845	90	17700
WMH192-4I*-TS	192	195	78 1/2	33	Four 5	2451	3 @ 335 ea	7300	43800	4466	26380	91	18760

* - Use corresponding letters in "Electrical Data" columns to complete the model numbers.

*** - Total Weight includes air curtain, transition and furnace weights

Features:

Air Curtain and Transition

- ❖ 5 & 7 HP continuous duty industrial motors
- ❖ Direct drive unit for heavy duty industrial projects
- ❖ Air curtain is CSA Certified to conform to UL 507 (US) and CSA 22.2 (Canada) Standards
- ❖ 5/8" Top mounting holes provided
- ❖ Cabinet has sufficient strength for fastening from overhead on both ends without intermediate support
- ❖ Adjustable air directional vanes with 40° sweep front to back
- ❖ Transition is shipped fully assembled and fastened to unit (overhead support required)
- ❖ Standard color is Titanium Silver
- ❖ Rust preventative electrostatic polyurethane powder coating
- ❖ 1 year parts warranty
- ❖ Freight Not Included (FOB Factory)
- ❖ Proudly Made in the USA

Indirect Fired Gas Furnaces

- ❖ ETL verified to be 83% efficient
- ❖ In-shot burner technology
- ❖ Aluminized tubular heat exchanger (20 gauge)
- ❖ Positive pressure 120V impellers (separate 120V, 1Ø power req'd)
- ❖ Power vented exhaust
- ❖ Single stage gas valve
- ❖ Standard direct spark ignition
- ❖ Certified for Category I and III Venting
- ❖ Natural gas
- ❖ Factory test fired
- ❖ Overhead mounting hardware provided (2 per furnace)

Options and Accessories: (see Accessories Brochure)

- ❖ Motor Control Panels with remote mounted t'stat
- ❖ 409 and 321 stainless steel heat exchangers
- ❖ Separated combustion
- ❖ Two stage and modulating gas valves
- ❖ LP gas
- ❖ Custom housing and transition colors and finishes (304SS, 316SS, Aluminum)

Sound Levels: (measured at 10' in an open field)

2 Motor Unit = 69 dBA, 3 Motor Unit = 70 dBA & 4 Motor Unit = 72 dBA

Electrical Data (FLA)	Unit Voltage (Voltage Code)			Electrical Data (FLA) Furnace
	208/230v (G)	460v (H)	575v (I)	115V
WMH96-2I*-TS	38/31.6	15.8	12.6	16.0
WMH120-2I*-TS	38/31.6	15.8	12.6	27.0
WMH144-2I*-TS	--/42.0	21.0	16.8	27.0
WMH168-3I*-TS	57/47.4	23.7	18.9	40.5
WMH192-4I*-TS	76/63.2	31.6	25.2	40.5

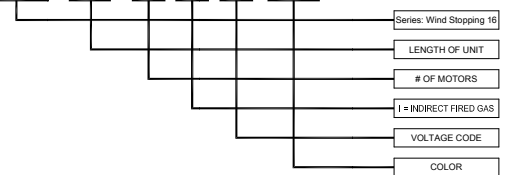
* - Use corresponding letters in "Electrical Data" columns to complete the model numbers.

Note: For Ampacity Multiply FLA X 1.25

Indirect Fired Gas Data						
Model Number	# of Furnaces	Input MBH per Furnace	Total Output MBH	Temp Rise (°F)	Flue Size	Natural Gas (NPT) CONN
WMH96-2I*-TS	2	250	415	29	5" Rnd	1/2"
WMH120-2I*-TS	2	400	664	39	6" Rnd	3/4"
WMH144-2I*-TS	2	400	664	36	6" Rnd	3/4"
WMH168-3I*-TS	3	350	872	41	6" Rnd	3/4"
WMH192-4I*-TS	3	400	996	35	6" Rnd	3/4"

EXAMPLE

WMH144-2 I H - TS



Intertek

Air Curtain Only

Furnace Only

NOTE: MARS AIR SYSTEMS, LLC reserves the right to change specifications and product design without notice. Such revisions do not entitle the buyer to corresponding changes, improvements, additions or replacements for previously purchased equipment.