



atmosphere is everything

14716 S. Broadway • Gardena, CA 90248 • USA  
 TEL: (310) 532-1555 • (800) 421-1266 • FAX: (310) 324-3030  
 Web Site: www.marsair.com • E-mail: info@marsair.com

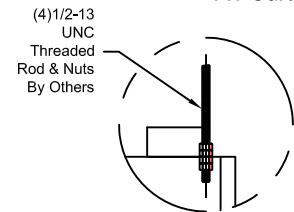
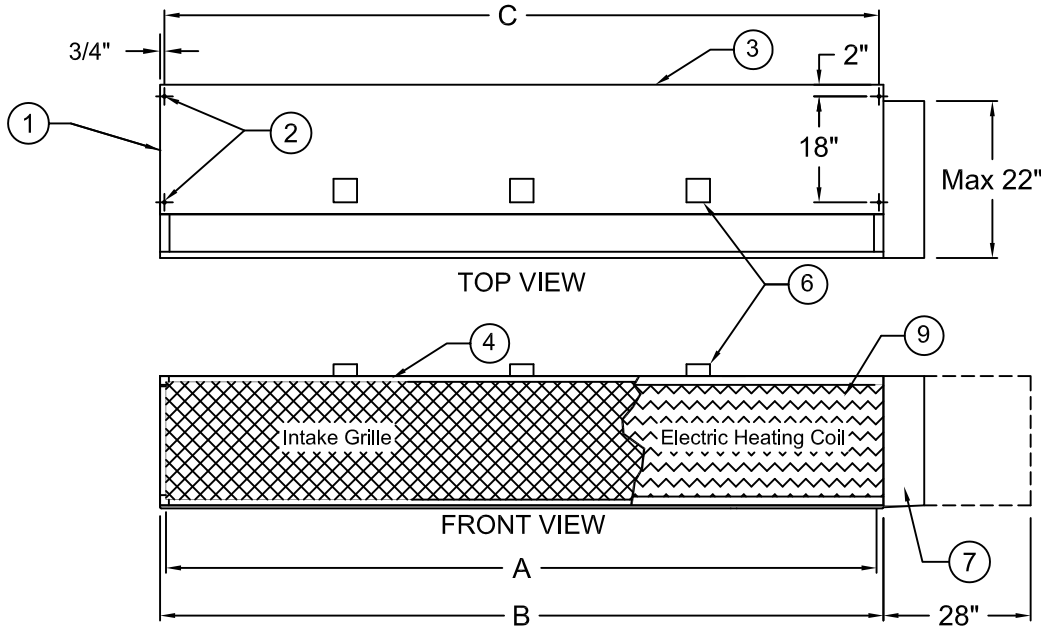
PROJECT		OPTIONS/ITEMS	
TITLE		DATE	
COMMENTS		10/20/15	PAGE
		REV. NO	
MODEL NO. WMH Series	DRAWING NO WMHE-F	DRAWN BY BH	CHECKED BY
		FILE NAME	

## Electric Heated Drawing

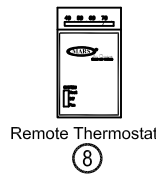
### WMH (Wind Stopping 16) Series



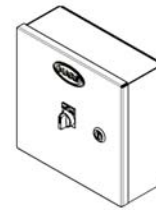
C US  
Air Curtain Only



### 9 10 Recommended Accessories



Remote Thermostat



Remote Control Panel



Door Limit Switches

\*- Use corresponding letters in "Electrical Data" columns to complete the model numbers.

MODEL NUMBER	NOZZLE LENGTH A (in)	OVERALL LENGTH B (in)	MOUNTING CENTER C (in)
WMH96-2E*-TS	96	99	97 1/2
WMH120-2E*-TS	120	123	121 1/2
WMH144-2E*-TS	144	147	145 1/2
WMH168-3E*-TS	168	171	169 1/2
WMH192-4E*-TS	192	195	193 1/2

#### Notes:

- This product is designed to meet the National Electric Code (NEC) and is CSA Listed.
- (4) 5/8" mounting holes provided on for overhead mounting provided, (2) on each end.
- All units have a self contained one piece cabinet, fire retardant and corrosion proof paint lock metal double protected with baked on Titanium Silver color, rust preventative electrostatic polyurethane powder coating.
- Cabinet is to be mounted from overhead and has sufficient strength for suspension from both ends without intermediate support.
- Unit is to be installed such that air flow is unobstructed. Unit has a 4.5" air discharge nozzle containing adjustable air directional vanes with 40° sweep front to back. To prevent unit damage, the air curtain must be installed such that the bottom of the air curtain is not below the door header.
- Units are direct drive. One external top mounted 2"x4" J-box provided above each motor.
- Electric heater shown with heater component panel on right side, as standard. (Note: This is not the same as the optional remote air curtain unit control panel, see note 10.) Optional left hand mounting available. Special remote mounted heater component panel available for installations with space limitations. Contact factory for details and minimum installation space requirements.
- Wall mounted 24 volt thermostat with remote "heat/off/fan" switch is shipped loose and field installed. Terminal block provided inside control panel.
- Circuit protection as per NEC by others.
- Optional remote air curtain unit control panel and door limit switch are field installed and wired by others. The remote air curtain unit control panel is required when a door limit switch is used to automatically turn the air curtain on as door begins to open. Special remote mounted heater component panel (see note 7) is integrated with the optional remote air curtain unit control panel when the two options are selected.

# WMH (Wind Stopping 16) Series

Electric Heated

Model Lengths 96" – 192"



atmosphere is everything

14716 S. BROADWAY, GARDENA, CA 90248 • Ph: (310)532-1555 Fax: (310)532-3030 • [www.marsair.com](http://www.marsair.com)  
© Copyright Mars Air Systems, LLC 2014

## Electric Heated Data Sheet

**Applications: Environmental Separation - Interior Door up to 20' and Exterior Door up to 18'**

WMH (Wind Stopping 16)	Mechanical Data						Lab Data					
Model Number	Nozzle Length (in)	Length (in)	Depth (in)	Height (in)	Motor (hp)	Weight (lbs)	Max Velocity (fpm)	Max Volume (cfm)	Avg Velocity (fpm)	Volume (cfm)	Uniformity (%)	Power Rating (watts)
WMH96-2E*-TS	96	115	28	22	Two 5	713	7300	21900	4466	13190	91	9390
WMH120-2E*-TS	120	139	28	22	Two 5	836	7600	28500	4231	15670	89	12420
WMH144-2E*-TS	144	163	28	22	Two 7	1007	7400	33300	3816	17022	82	13300
WMH168-3E*-TS	168	187	28	22	Three 5	1197	6700	35175	3822	19845	90	17700
WMH192-4E*-TS	192	211	28	22	Four 5	1426	7300	43800	4466	26380	91	18760

\* - Use corresponding letters in "Electrical Data" & "Heater Wattage Data" columns to complete the model numbers.

### Features:

#### Air Curtain

- ❖ Continuous Duty TEAO Motors
- ❖ Sleek self-contained one piece heavy gauge corrosion proof paint lock metal design
- ❖ Air curtain, excluding coils, shall be Canadian Standards Association Certified (CSA)
- ❖ (4) 5/8" Top and wall mounting holes provided
- ❖ Cabinet has sufficient strength for fastening to wall on both ends without intermediate support
- ❖ Adjustable air directional vanes with 40° sweep front to back
- ❖ Standard color is Titanium Silver
- ❖ Rust preventative electrostatic polyurethane powder coating
- ❖ 18 month parts warranty
- ❖ Freight Not Included (FOB Factory)
- ❖ Proudly Made in the USA

#### Electric Heater Coil and Wiring

- ❖ Electric Heaters are U.L. listed for "Zero Clearance"
- ❖ Coils are an open type for rapid temperature rise to be located in the air curtain's intake directly in the air stream
- ❖ Automatic and manual reset thermal overload protection provided
- ❖ Airflow pressure switch provided
- ❖ Controls internally mounted, prewired ready for power connection and accessible through the intake or top access panels
- ❖ A heat/off/fan switch is unit mounted at the bottom and the control voltage is 24 volts
- ❖ A wall mounted 24 volt thermostat is included (field wired and installed by others)

### Options and Accessories: (see Accessories Brochure)

- ❖ Remote air curtain unit control panel
- ❖ Remote electric heater component panel
- ❖ Adjustable time delay (1 sec to 17 min)
- ❖ Remote mounted fused or non-fused disconnects
- ❖ Heat on Demand
- ❖ Master + Slave Control Kit
- ❖ 1/4" Aluminum Mesh Filters
- ❖ Custom colors and finishes (304SS, 316SS)

### Sound Levels: (measured at 10' in an open field)

2 Motor Unit = 69 dBA, 3 Motor Unit = 70 dBA & 4 Motor Unit = 72 dBA

Electrical Data (FLA)	Unit Voltage			Heater Wattage	
	230v/3Ø (F)	460v/3Ø (H)	575v (I)	3Ø kW	Temp Rise (°F)
WMH96-2E**-TS	360	180	131.6	131	31
WMH120-2E**-TS	421	210	155.7	155	31
WMH144-2E**-TS	464	232	168.7	168	31
WMH168-3E**-TS	539	270	196.9	196	31
WMH192-4E**-TS	608	304	217.9	217	26

\* - Use corresponding letters in "Electrical Data" columns to complete the model numbers.

Note: For Ampacity Multiply FLA X 1.25

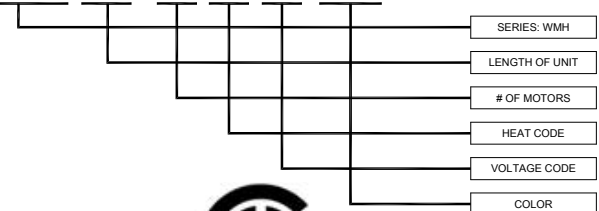
Model Number	Motor Amperage			
	208v/3Ø (E)	230v/3Ø (F)	460v/3Ø (H)	575v/3Ø (I)
WMH96-2E**-TS	38.0	31.6	15.8	12.6
WMH120-2E**-TS	38.0	31.6	15.8	12.6
WMH144-2E**-TS	48.0	42.0	21.0	16.8
WMH168-3E**-TS	57.0	47.4	23.7	25.2
WMH192-4E**-TS	76.0	63.2	31.6	33.6

\* - Use corresponding letters in "Electrical Data" columns to complete the model numbers.

Note: For Ampacity Multiply FLA X 1.25

EXAMPLE

WMH168-3 E F - TS



NOTE: MARS AIR SYSTEMS, LLC reserves the right to change specifications and product design without notice. Such revisions do not entitle the buyer to corresponding changes, improvements, additions or replacements for previously purchased equipment.