

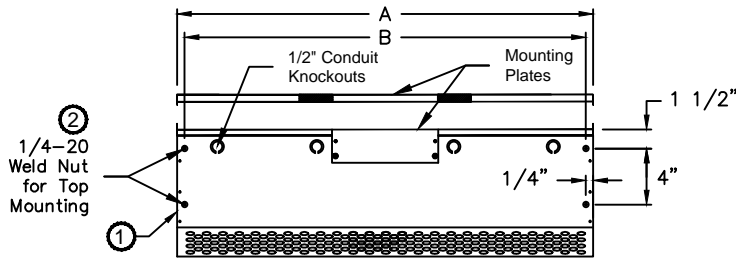
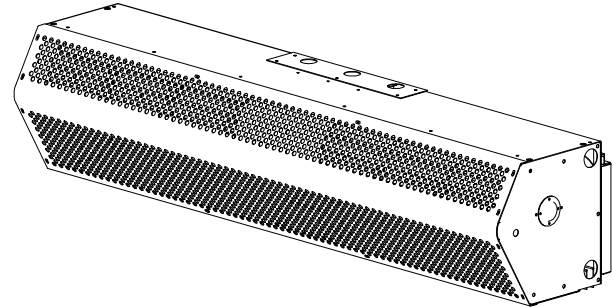


14716 S. Broadway • Gardena, CA 90248 • USA  
 TEL: (310) 532-1555 • (800) 421-1266 • FAX: (310) 324-3030  
 Web Site: www.marsair.com • E-mail: info@marsair.com

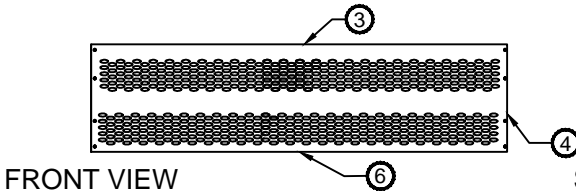
PROJECT		OPTIONS/ITEMS	
TITLE			
COMMENTS		DATE 3/31/15	PAGE
		REV. NO	
MODEL NO. LP2 Series	DRAWING NO LPN2U-F	DRAWN BY FRC	CHECKED BY
		FILE NAME	

## Unheated Drawing

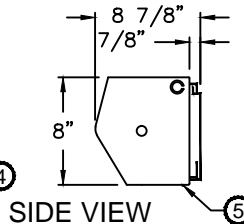
### LPN2 (LoPro2 Sanitation) Series



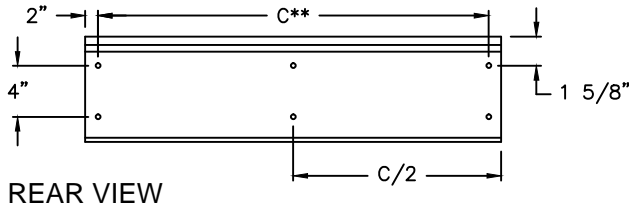
TOP VIEW



FRONT VIEW

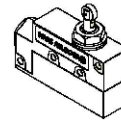


SIDE VIEW



REAR VIEW

#### ⓑ Recommended Accessories



Door Limit Switches



Brackets

\*- Use corresponding letters in "Electrical Data" columns to complete the model numbers.

\*\*- "C" only applies to single units up to 72" units. Dims are not applicable for units 84" and longer.

MODEL NUMBER	OVERALL LENGTH A (in)	MOUNTING LENGTH B (in)	REAR MOUNTING CENTER C (in)
LPN225-1U*-OB	25	24 1/2	21
LPN236-1U*-OB	36	35 1/2	32
LPN242-1U*-OB	42	41 1/2	38
LPN248-1U*-OB	48	47 1/2	44
LPN260-1U*-OB	60	59 1/2	56
LPN272-1U*-OB	72	71 1/2	68
LPN284-2U*-OB	86	85 1/2	N/A
LPN296-2U*-OB	98	97 1/2	N/A
LPN2108-2U*-OB	110	109 1/2	N/A
LPN2120-2U*-OB	122	121 1/2	N/A
LPN2144-2U*-OB	146	145 1/2	N/A

#### Notes:

- This product is designed to meet the National Electric Code (NEC), ETL (UL 507 and CSA 22.2) and ETL Sanitation (NSF/ANSI 37).
- 1/4" mounting holes provided for wall mounting (4) and overhead mounting (4), (2) on each end.
- All units have a self contained one piece cabinet up to 72", fire retardant and corrosion proof paint lock metal double protected with baked on Obsidian Black color, rust preventative electrostatic polyurethane powder coating.
- Cabinet has sufficient strength for fastening to wall on both ends without intermediate support. LPN225 comes with Aluminum washable filter standard.
- Unit is to be installed such that air flow is unobstructed. Air discharge nozzle containing an adjustable air directional vane with 40° sweep front to back.
- Units greater than 72" are double units joined with a 2" mounting bracket located in the center and must be center supported, field installed.
- Circuit protection as per NEC by others.
- Optional door limit switch and mounting brackets are field installed and/or wired by others. The door limit switch is to be mounted such that the air curtain turns on as door begins to open. To prevent unit damage, the mounting brackets must be installed such that the bottom of the air curtain is not below the door header.

# LPN2 (LoPro2 Sanitation) Series

Unheated

Model Lengths 25" – 144"



atmosphere is everything

14716 S. BROADWAY, GARDENA, CA 90248 • Ph: (310)532-1555 Fax: (310)532-3030 • [www.marsair.com](http://www.marsair.com)  
© Copyright Mars Air Systems, LLC 2014

## Unheated Data Sheet

### Applications: Insect Control (up to 7')

LPN2 (Low Profile Sanitation 2) Series 2	Mechanical Data						Lab Data	
Model Number	Nozzle Length (in)	Length (in)	Depth (in)	Height (in)	Motor (hp)	Weight (lbs)	Max Velocity (fpm)	Max Volume (cfm)
LPN225-1U*-OB	25	25	9	8	1/6	20	1800	625
LPN236-1U*-OB	36	36	9	8	1/6	32	1800	900
LPN242-1U*-OB	42	42	9	8	1/6	35	1800	1050
LPN248-1U*-OB	48	48	9	8	1/6	40	1800	1200
LPN260-1U*-OB	60	60	9	8	1/6	48	1800	1500
LPN272-1U*-OB	72	72	9	8	1/6	58	1800	1800
LPN284-2U*-OB	86	86	9	8	Two 1/6	75	1800	2100
LPN296-2U*-OB	98	98	9	8	Two 1/6	83	1800	2400
LPN2108-2U*-OB	110	110	9	8	Two 1/6	92	1800	2700
LPN2120-2U*-OB	122	122	9	8	Two 1/6	102	1800	3000
LPN2144-2U*-OB	146	146	9	8	Two 1/6	122	1800	3600

\* - Use corresponding letters in "Electrical Data" columns to complete the model numbers.

Note: ETL Sanitation models available in 60 Hz only.

#### Features:

- ❖ 1/6 HP continuous duty motors
- ❖ Sleek self-contained one piece heavy gauge corrosion proof paint lock metal design
- ❖ Very low profile design, 8" (H) x 8 7/8" (D)
- ❖ ETL Certified to conform to ANSI/NSF 37 Standards for Service Windows up to 4' above the counter top (filters required) and for Customer Entrances up to 7'
- ❖ ETL Certified to conform to UL 507 (US) and CSA 22.2 (Canada) Standards
- ❖ Wall mounting bracket removable for easy installation
- ❖ Top mounting well nuts provided (1/4")
- ❖ Cabinet has sufficient strength for fastening to wall on both ends without intermediate support up to 72". (Models 84" to 144" require intermediate support in the center.)
- ❖ Adjustable air directional vanes with 40° sweep front to back
- ❖ Standard color is Obsidian Black
- ❖ Rust preventative electrostatic polyurethane powder coating
- ❖ 5 year parts warranty
- ❖ Freight Included (FOB Continental USA)
- ❖ Proudly Made in the USA

Electrical Data (FLA)	Unit Voltage (Voltage Code)	
	115v/1Ø (A)	208/230v/1Ø (D)
LPN225-1U*-OB	2.4	1.2
LPN236-1U*-OB	2.4	1.2
LPN242-1U*-OB	2.4	1.2
LPN248-1U*-OB	2.4	1.2
LPN260-1U*-OB	2.6	1.4
LPN272-1U*-OB	2.6	1.4
LPN284-2U*-OB	4.8	2.4
LPN296-2U*-OB	4.8	2.4
LPN2108-2U*-OB	5.0	2.6
LPN2120-2U*-OB	5.2	2.8
LPN2144-2U*-OB	5.2	2.8

\* - Use corresponding letters in "Electrical Data" columns to complete the model numbers.

Note: For Ampacity Multiply FLA X 1.25

#### Options and Accessories: (see Accessories Brochure)

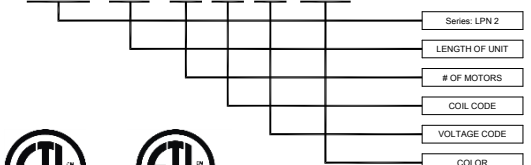
- ❖ Door Limit Switches
- ❖ Wall and Overhead Bracket
- ❖ Custom colors and finishes (304SS, 316SS)

#### Sound Levels: (measured at 10' in an open field)

(25" & 36") - 49 dBA, (42") - 50 dBA, (48") - 52 dBA, (60"-96") - 53 dBA & (108"-144") - 54dBA

EXAMPLE

LPN2 72 - 1 U A - OB



NOTE: MARS AIR SYSTEMS, LLC reserves the right to change specifications and product design without notice. Such revisions do not entitle the buyer to corresponding changes, improvements, additions or replacements for previously purchased equipment.